

GMair35

- GMair35 High Pressure Compressor is a 35 bar - 29 m³/min flow diesel-driven screw compressor designed for the conditions in the Nordic countries.
- Reliability has been the most important driver for the selected components in the compressor. The engine is Scania's 16-liter V8, and the screw is GHH Rand.
- The user interface is easy to use, special attention has been paid to usability and maintainability of the machine.
- Superior efficiency is achieved with hydraulic cooler fans with automatically adjusting speeds.
- The quiet running sound enables the use of compressor in densely populated areas.
- New options include upward direction of the radiator exhaust air, an additional compressed air tank, air cooling and drying system, and a remote control.
- Geomachine's data logger enables data collection and process monitoring remotely.

DIMENSIONS

Height	2.4 m
Width	2.5 m (frame 2.4 m)
Length	3.95 m / 4.2 m (with air guide)
Weight (dry)	7,5 t

ENGINE

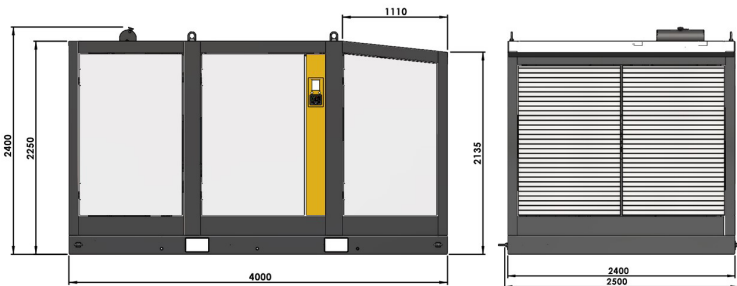
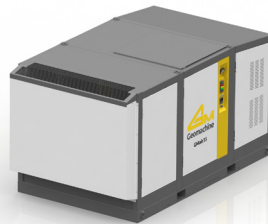
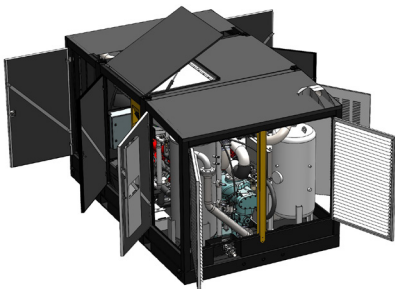
Manufacturer	Scania
Model	DC 16 317A (01-51C)
Max. power	478 kW
Emission class	Stage V
Fuel tank	1000 liters
DEF (Adblue) tank	70 liters

SCREW COMPRESSOR

Manufacturer	GHH-RAND
Model	CF1000H
Max. pressure	35 bar
Max. flow	29 m ³

OPTIONS

Engine heater	Webasto Thermopro 90 (9 kW)
Air cooling	●
Compressed air drying unit	●
Additional tank for compressed air	●
Remote control	●
Upward direction of exhaust air	●



THE GROUND
BREAKER

GMair35



Inspired by the Ice Age

Geomachine is designed for the most challenging conditions in the world. Since it can even drill into soil shaped by the Ice Age, we dare to promise it will work anywhere.